

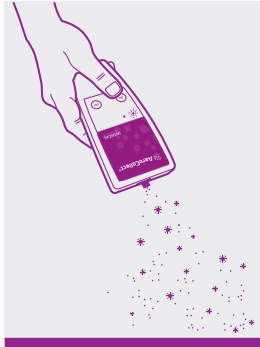
Quick Guide

Poultry



Step 1
Insert the
sample
chamber

Insert the sample chamber in the direction indicated by the arrow.



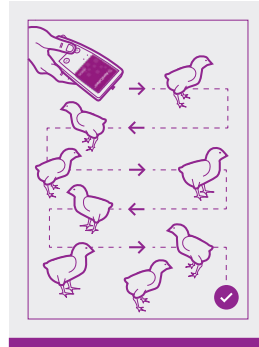
Step 2
Start!
Press ON
(green)

The instrument can be started by pushing the green ON-button.



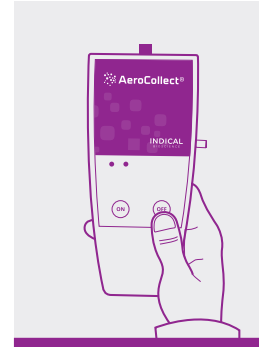
Step 3
Kick up dust
from the
floor

Kick up the bedding material to facilitate more airborne particles.



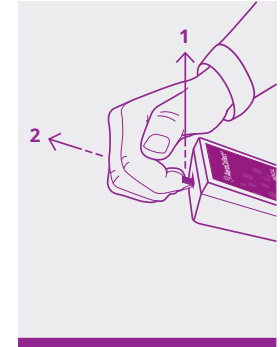
Step 4
Sampling
from entire
house

Walk a route in the entire house for a minimum of 5 minutes to ensure a reliable result.



Step 5
Stop!
Press OFF
(red)

The sampling procedure is stopped by pressing the red OFF-button.



Step 6
Remove
the sample
chamber

Lift up (1) the front of the sample chamber while pulling it out (2) of the AeroCollect®.



Watch how to use AeroCollect®
Scan the QR code with the camera on your phone



Quick Guide

Poultry