

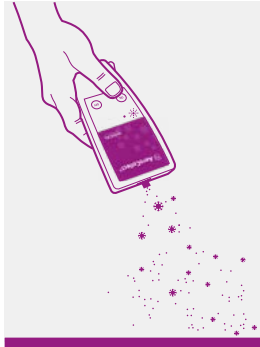
Quick Guide

Pigs



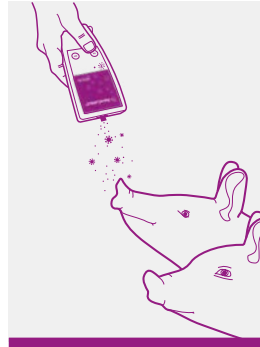
Step 1
Insert the
sample
chamber

Insert the sample chamber in the direction indicated by the arrow.



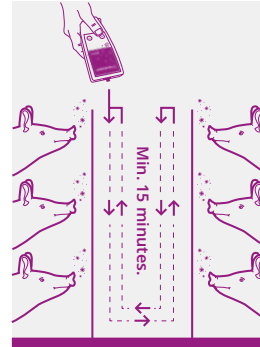
Step 2
Start!
Press ON
(green)

The instrument can be started by pushing the green ON-button.



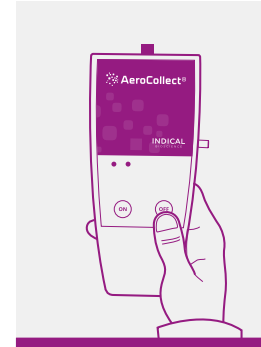
Step 3
Collect
close to
the pigs

Collect the sample as close to the pigs as possible. If the pigs are curious, let them breathe into the sample chamber.



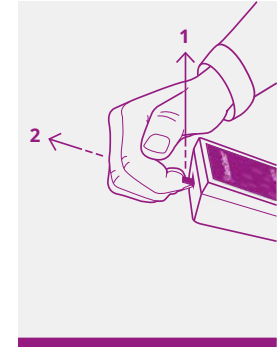
Step 4
Sampling
from entire
section

Walk along the pens while pointing the AeroCollect® towards the pigs. Samples should be collected for a minimum of 15 minutes in each section.



Step 5
Stop!
Press OFF
(red)

The sampling procedure is stopped by pressing the red OFF-button.



Step 6
Remove
the sample
chamber

Lift up (1) the front of the sample chamber while pulling it out (2) of the AeroCollect®.



Watch how to use AeroCollect®
Scan the QR code with the camera on your phone



Quick Guide

Pigs